

## Water Environment Improvements Project Evidence Form

### Scope & Purpose

This form is to be used by the external Water Environment Governance Group (WEGG), to review, validate and formally approve the length of bluespaces improved for the Water Environment Improvements ODI. The form will be completed by the Water Environment Team with support from project partners and presented to the WEGG. After formal approval, the km of water environment improved will be recorded against the ODI and projects will be marked as completed on the Water Environment Scorecard and illustrated as delivered in the Bluespaces Mapping Portals.

### Project Name

River Lyne Revitalised

### Project Lead

Company/ Organisation	Named Lead	Position
Northumberland Rivers Trust	Steve Lowe	Project Development Manager

### Bluespaces Improved

Year	Claimed	Proposed	Reason For Any Change
Year 3	2.5 km	5.3 km	Some improvements have not been possible at two sites due to increasing costs and lack of landowner permissions; numbers have been amended to reflect improvements delivered

### Water Environment Assurance

This project has been reviewed internally to ensure it has delivered benefits above and beyond our baseline and regulatory obligations to improve the water environment accessible to customers across at least two out of three aspects. Following our assurance process, the project was approved by both our internal and external groups for review before delivery. This form presents evidence of project completion and the outputs achieved, to request project sign off.

Level	Project Acceptance Date	Project Approval Date	Completed Project Sign Off Date
Project Team	March 2022	N/A	N/A
Water Environment Steering Group (Internal)	March 2022	March 2022	N/A
Water Environment Governance Group (External)	March 2022	March 2022	May 2023

### Project Timescales

Candidate Project Approved	Project Initiated	Project Completed
March 2022	March 2022	March 2023

## Project Summary and Highlights

### Summary:

Northumberland Rivers Trust (NRT) has improved 2.5 km of bluespaces at Chugdon Dene, Ulgham Meadow Local Nature Reserve (LNR), and South Linton Farm in the River Lyne catchment.

The project has delivered great outcomes for the local area including new partnerships and future opportunities. NRT has worked with local landowners and identified opportunities for future work to further address diffuse pollution and improve biodiversity. Complementary access improvements at South Linton and Ulgham Meadow Local Nature Reserve (LNR) have supported previous work to improve access connectivity in the area. Additional project benefits arose from the capacity to create nursery beds at Linton and Cresswell for cuttings from five native (and rare) Black Poplar trees which are due to be felled in Linton Recreation Ground for safety reasons.

### Highlights:

- Access improvements have been undertaken at South Linton, and Ulgham Meadow Local Nature Reserve (LNR)
- 4200 native trees have been planted on 4.2 ha of former pasture at South Linton, including 600 alder planted along 2 km of riverbank - tree planting targets were exceeded through the addition of donated trees from the community
- Over 10 tree planting volunteering opportunities were offered through the project, benefitting 112 attendees, including volunteers from Newcastle Hospitals Green Gym, Greggs (Corporate team building), Amble 1st School, Northumberland Young Adventurers, Northumberland Scouts and NRT.
- Engagement events and litter removal have created opportunities for volunteers and communities to engage with the River Lyne and local habitats



Maps

## River Lyne Revitalised

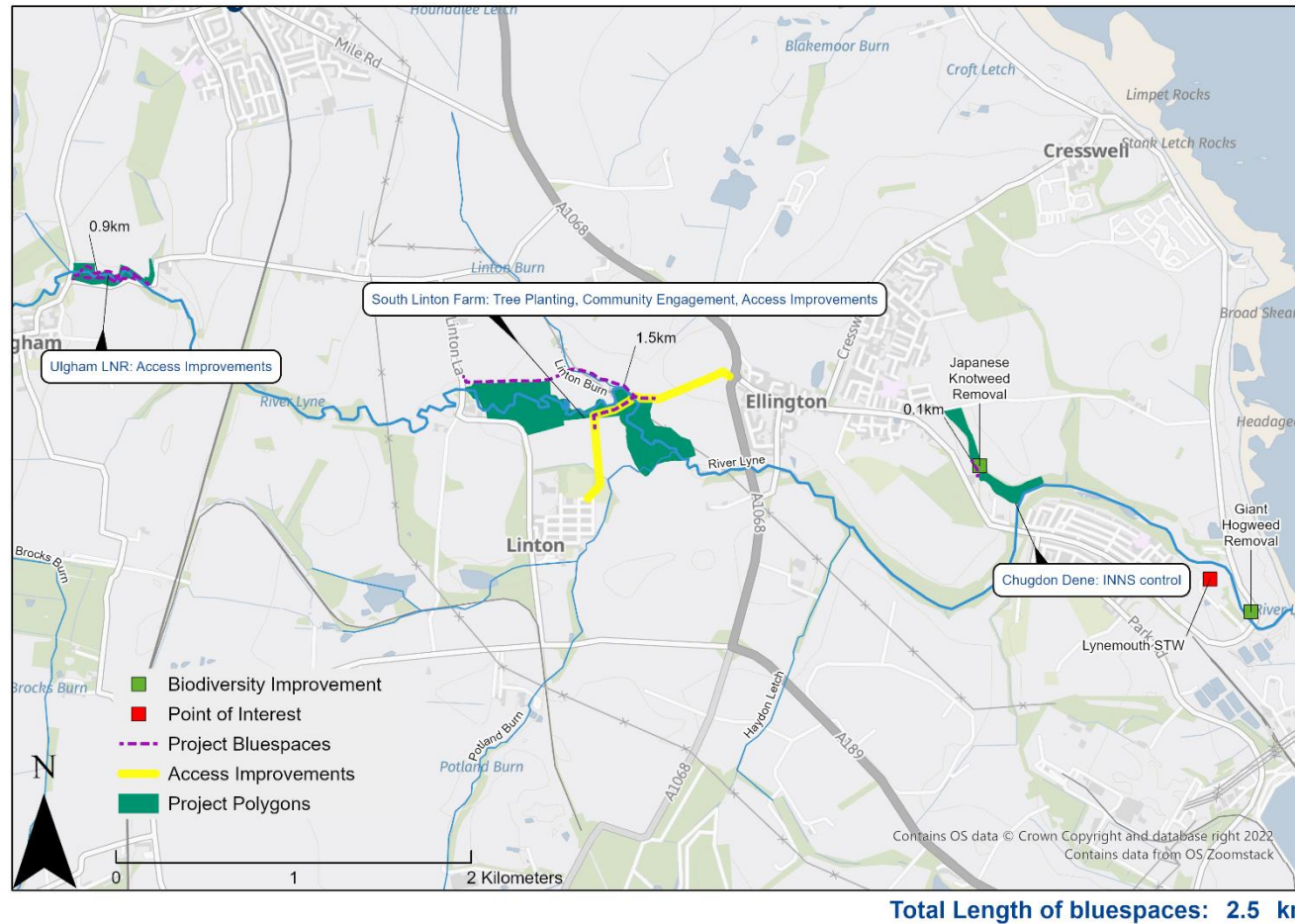





Figure 1: Bluespaces improved through the River Lyne Revitalised project. (Substantial delivery not possible at two sites due to increasing costs and landowner permissions see 'Other Supporting Evidence' section)

**Project Outputs, Benefits & Evidence Against Criteria**

Access, Facilities & Recreation	
Expected Project Outcomes	Benefits
<ol style="list-style-type: none"> <li>1. New riparian woodland priority habitat in publicly accessible areas will create a more pleasant water environment and shelter for residents and visitors, improving the quality and character of the access routes</li> <li>2. Access improvements will be delivered to riverside path surfaces in Chugdon Dene, Ulgham LNR, Ellington Dene along with path works at Linton Village</li> <li>3. Volunteering opportunities will be provided for the community through riverside tree planting and habitat creation, offering health and wellbeing benefits</li> <li>4. Community engagement events will be delivered across the project area. This will include guided walks, litter picking/ stream cleans, and family engagement events. This will link residents to the River Lyne and their local bluespaces and providing opportunities for people to engage with nature and water environments</li> </ol>	<ul style="list-style-type: none"> <li>➤ A1: Increases access to, engagement with and enjoyment of the water environment</li> <li>➤ A2: Benefits health and wellbeing through:</li> </ul>
Outputs	
<ol style="list-style-type: none"> <li>1. New woodland and hedgerow has been created with 4200 native trees planted directly adjacent to public right of way and River Lyne</li> <li>2. Enhancements have been undertaken to footpaths at Linton including installation of stiles and bridge repairs. A footpath assessment was undertaken at Ulgham, from which recommendations led to a local contractor undertaking complete reinstatement of a section steep slope as a community donation. Additional works were done by NRT to install a handrail, to replace numerous steps with donated materials, and to clear blocked drains on the footpath</li> <li>3. 10 tree planting volunteering opportunities were offered with 112 attendees, including volunteers</li> <li>4. There was limited take up by local residents for community engagement events, but group litter picks were undertaken and tree planting events were used as community engagement events at Linton. A river clean-up in 2022 was postponed due to snow and is planned for 2023</li> </ol>	
Evidence	
  	
<p>Brew Break during family tree planting day, tree and hedgerow planting next to footpath, new stile and handpost installed</p>	



New steps and handrail at Ulgham Local Nature Reserve delivered in kind by local contractor following NRT assessment



Step and drainage improvements at Ulgham LNR



NRT volunteers and Greggs Corporate Day

**Wildlife & Biodiversity**

Expected Project Outcomes	Benefits
<ol style="list-style-type: none"> <li>1. Native woodland and riverside tree planting (minimum of 1.5 ha across 2 km of riverbanks) at North and South Linton Farms. Additional tree planting and wet woodland habitat creation (approx. 400m<sup>2</sup>) in Ellington Dene and habitat improvements at Ulgham LNR will create connected riparian habitat.</li> <li>2. Removal of Japanese Knotweed in Chugdon Dene will help manage this invasive species, additional treatment of Giant Hogweed will take place near Lynemouth STW</li> </ol>	<ul style="list-style-type: none"> <li>➤ B1: Improves the quantity, quality and connectivity of habitats</li> <li>➤ B3: Reduces risk or impact of invasive non-native species (INNS)</li> </ul>

**Outputs**

1. 4200 native trees have been planted on 4.2 ha of former pasture at South Linton, including 600 alder planted across 2 km of riverbank. An additional 20ha of land has also been set aside for future woodland creation and will also naturally regenerate from surrounding seed sources. 3000 trees were purchased from Trees Please and trees were donated from the community
2. Surveys were undertaken for non-native signal crayfish (negative in the target stretch). A whole stand of Japanese Knotweed in Chugdon Dene was injected with Glyphosate by a trained technician – this was a much bigger stand than anticipated. The landowner of the adjacent farm (Crown Estate) was advised of encroachment into fields and potential spread of rhizomes if land was ploughed. Information was recorded on the North East INNS dataset. Giant Hogweed at Lynemouth was also treated by Northumberland County Council.

**Evidence**



Trees planted at South Linton Farm



Trees planted with and without guards, riverbank planting of alder during winter, family tree planting events at South Linton



Owl Box making and installation at South Linton



Stand of Japanese Knotweed, treated in the project

### Water Quality

Expected Project Outcomes	Benefits
<ol style="list-style-type: none"> <li>Riverside tree planting and addressing issues with paths and field drainage from area around Linton Village will reduce sediment and diffuse pollution entering the watercourse</li> <li>Planned interventions address WFD reasons for not achieving good status (RNAGS) and contribute towards achieving Good ecological status by 2027 (WFD status currently Poor)</li> </ol>	<ul style="list-style-type: none"> <li>➤ C1: Reduces pollutants entering waters from point or diffuse sources</li> <li>➤ C2: Contributes towards improved status or no deterioration of rivers or bathing waters or protecting drinking water</li> <li>➤ C3: Improves state and function of water, including naturalisation, visual appearance, litter and odour</li> </ul>

### Outputs

- The native trees planted will help filter nutrients and run off from neighbouring land. Every tree planting session included collection and recycling of roadside or riparian litter. Path and field drainage issues were not addressed in this phase of the project but issues identified will be fed into the River Lyne Restoration Strategy produced by JBA Consulting for the EA.
- This project has helped inform the River Lyne Restoration Strategy, and through that identified water quality issues and activities which could be taken to further improve WFD status will be funded through EA WEIF funding and other sources. Additional resource to support this activity is expected to be received from Highways England in Summer 2023.

### Evidence



Riverbank planting of alder during winter on the Lyne, typical stretch of riparian tree coverage with poor age structure

Dec 5

**Catchment Sensitive Farming and Soil Health Support in the Lyne**

Catchment Sensitive Farming invites you to a free event at Cockle Park Farm in December

By CSF North East

Follow

Sales Ended

Details

Catchment sensitive farming event in the Lyne focused on river water quality, attended by NRT and NWG



**Additional & Secondary Benefits**

Expected Project Outcomes	Benefits
<ol style="list-style-type: none"> <li>1. Tree planting has benefits for carbon capture and natural flood management</li> <li>2. Project would enhance the local environment in one of the most socially deprived wards in Northumberland</li> <li>3. Project would initiate delivery of the River Lyne Restoration Strategy and contributes to Great Northumberland Forest tree planting targets</li> </ol>	<ul style="list-style-type: none"> <li>➤ D1: Provides resilience and adaptation to climate change and/or reduces the risk of flooding</li> <li>➤ D2: Provides benefits to local communities, the local economy or NWG</li> <li>➤ D3: Supports strategic project or investment into strategic partnership or landscape/regional activity</li> </ul>

**Outputs**

1. 4200 native trees have been planted that will help to capture carbon and provide natural flood management benefits.
2. Over 10 community events have been delivered providing an improved water environment and better opportunities for better access and engagement with the water environment. Additional project benefits arose from the capacity to create nursery beds at Linton and Cresswell for cuttings from five native (and rare) Black Poplar trees which are due to be felled in Linton Recreation Ground for safety reasons. Ulgham LNR group also advised NRT about a further funding opportunity to provide a crossing replacing dangerous stepping stones.
3. The River Lyne Restoration Strategy was launched in April 2022. All environmental data including numbers of trees planted was supplied to ERIC (NE). A future planned NRT project submission to Heritage Lottery Fund will include a local work-based learning project in the catchment building on work delivered in this project.

**Evidence**



**River Lyne Restoration Strategy**

**Final Restoration Plan**

April 2022

[www.jbaconsulting.com](http://www.jbaconsulting.com)



Environment Agency – North East Region  
Tyneside House,  
Skinnerburn Road,  
Newcastle Business Park,  
Newcastle upon Tyne  
NE4 7AR

Visit with NRT to Lynemouth Treatment works Jan 2023, River Lyne Restoration Strategy

Customer Testimonies & Media

“Thanks for the work you carried out, much appreciated. We are hoping to start regular maintenance once the current bad weather is over, so hopefully we will be able to prevent things slipping backwards! We are planning four additional projects one of which is to explore an improved river crossing.”

**David Parkin, Ulgham LNR**

“Thanks so much for today, everyone had a brill time, kids and mummy's alike, and the weather was kind too! 🥰”

**Kelly Turner, Amble First School**

“This is truly amazing! and thank you! The kettle is on if you are passing anytime! We have been working with you for a couple of years now, including tree and hedgerow works along the river Lyne. We welcome further opportunities of additional improvements, particularly if this can create learning and skill prospects for young people. We are proud to be a part of helping young people.”

**Chris Sanderson – Landowner South Linton**

“A great day out today for Greggs IT & Business Change helping [Northumberland Rivers Trust](#) with some re-wilding and habitat building work. Greggs provide the opportunity for their teams to undertake volunteer work and this year we chose again to support the great work the NRT do protecting and preserving our rivers! We were fuelled with [Greggs](#) goodies and blessed with the first proper weather of spring too 🌞🌞”

**Tom Holloway, Greggs**

“Thank you. for this. We really enjoyed yesterday, and thanks a lot for all your advice and help. I hope we can assist you further with your riverside planting work.”

**Hugh Edmondson, Greater Morpeth Development Trust**

**Northumberland Rivers Trust**  
21 February · 🌐

Great day down on the river with our mates from Greggs!

- 700 trees planted
- 2 owl boxes erected
- 2 artificial otter holts built
- Pies and pasties eaten - lost count

Thanks to everyone for the hard work and hope you all enjoyed it!!

33 likes · 3 comments · 2 shares

**Northumberland Rivers Trust is in Ulgham.**  
21 February · 🌐

Ulgham LNR needed a bit of improvement to access paths so Pete & Steve spent a day upgrading and replacing steps as well as unblocking a culvert.

This work was completed with support from Northumbrian Waters Bluespaces Programme.

21 likes · 1 comment

**Northumberland Rivers Trust**  
27 December 2022 · 🌐

Wow - another 600 trees into the Lyne catchment just before Xmas! A great day and fabulous work from our committed volunteers! More coming in the New Year so let us know if you want to help.

15 likes · 2 comments · 3 shares

**Top fan**  
Tom Holloway  
Thanks for the opportunity! We all had a great day!  
6 w

**Top fan**  
Mary Braithwaite  
Well done everybody.  
6 w

**Fiona Stafford**  
When and where for the next few  
14 w

Social Media evidence of successful tree planting with Greggs and access improvements delivered at Ulgham

## Lead Partner Quotes & Testimonials

*"Its been great to see so many volunteers and groups come along to help us plant trees at South Linton this year. Each event is different and we have made a huge contribution to woodland cover on this stretch of the Lyne. We couldn't do this without the support of so many, especially the landowners Deana and Chris, who have become great friends too! So its really become a community project as more and more people become engaged with their river. Ive been amazed at how little locals know about the heritage and ecology of this lovely little stream but also how angry they get to realise the legacy left by industry. Luckily that creates an enthusiasm to get involved in some way, bringing local action into the area.*

*NRT has been involved in raising awareness of the river Lyne and its coast over recent years, we are pleased to see a positive change, although realise it has some way to go as yet."*

**Steve Lowe, Northumberland Rivers Trust**

Other Supporting Evidence

Walking the Lyne Video

<https://www.youtube.com/watch?v=gqhGwT67tK4>



Path resurfacing on Ellington to Linton route (pre Bluespaces funding)

River Lyne Revitalised

Northumbrian Water and Northumberland Rivers Trust are working in partnership to deliver environmental improvements to 5.3km of bluespaces in the River Lyne catchment from May 2022.

Bluespaces are areas around water that are freely accessible to our customers via road, footpath, bridleway, or other public access. The bluespaces impacted and improved by this project are shown in purple on the featured map.

Tree Planting and Habitat Creation:

Habitat creation and riverside tree planting will produce connected riparian wildlife habitat for wildlife and reduce sediment and diffuse pollution entering the watercourse.

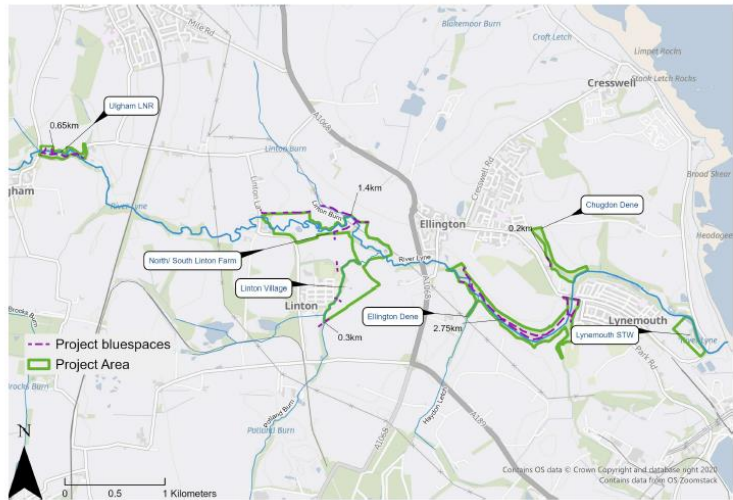
Woodland creation will improve the quality and character of existing access routes and create a more pleasant water environment and provide shelter for residents and visitors.

Community Engagement:

Community engagement events will be delivered across the project area. These will include guided walks, litter picking/ stream cleans, and family engagement events, linking residents to the River Lyne and their local bluespaces and providing opportunities for people to engage with nature and their local water environments

Access Improvements

Access improvements will be delivered to riverside path surfaces in Chugdon Dene, Ulgham Local Nature Reserve, Ellington Dene along with works at Linton Village to addressing issues with paths and field drainage.



Results of a river clean up in Lynemouth in 2021



Riverbank erosion in the catchment can impact runoff in the watercourses'



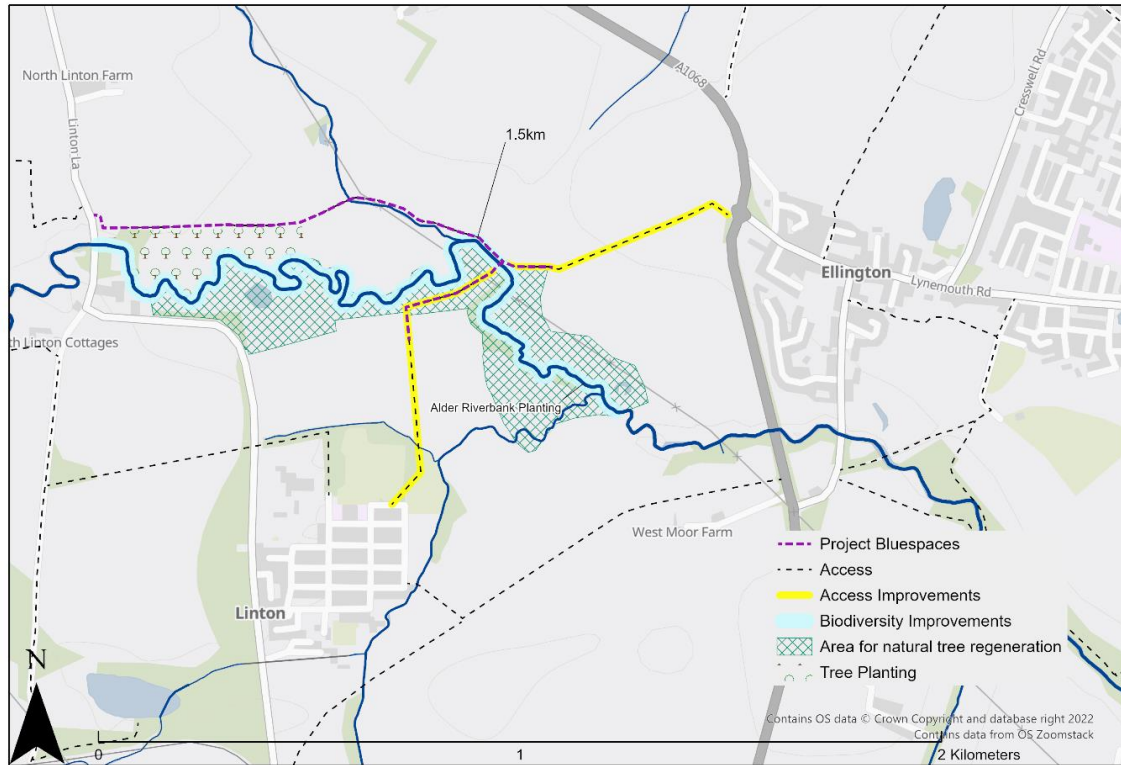
Riverbank access between Ellington, Linton, and Ulgham

NW community portal

		Lyne 2400	Lyne Riparian 600
<b>Species</b>	<b>%</b>	240	600
Common Oak	<i>Quercus robur</i>	240	
Sessile Oak	<i>Quercus petraea</i>	168	
Alder	<i>Alnus glutinosa</i>	168	
Aspen	<i>Populus tremula</i>	144	
Wych Elm	<i>Ulmus glabra</i>	192	
Hawthorn	<i>Crataegus Monogyna</i>	120	
Blackthorn	<i>Prunus spinosa</i>	360	
Hazel	<i>Corylus avellana</i>	48	
Holly	<i>Ilex aquifolium</i>	144	
Rowan	<i>Sorbus aucuparia</i>	240	
Downy Birch	<i>Betula pubescens</i>	240	
Silver Birch	<i>Betula pendula</i>	24	
Elder	<i>Sambucus nigra</i>	24	
Willow	<i>Salix cinerea</i>	24	
Wild cherry	<i>Prunus avium</i>	24	
Bird cherry	<i>Prunus padus</i>	24	
<b>TOTAL</b>	<b>100</b>	<b>2400</b>	<b>600</b>

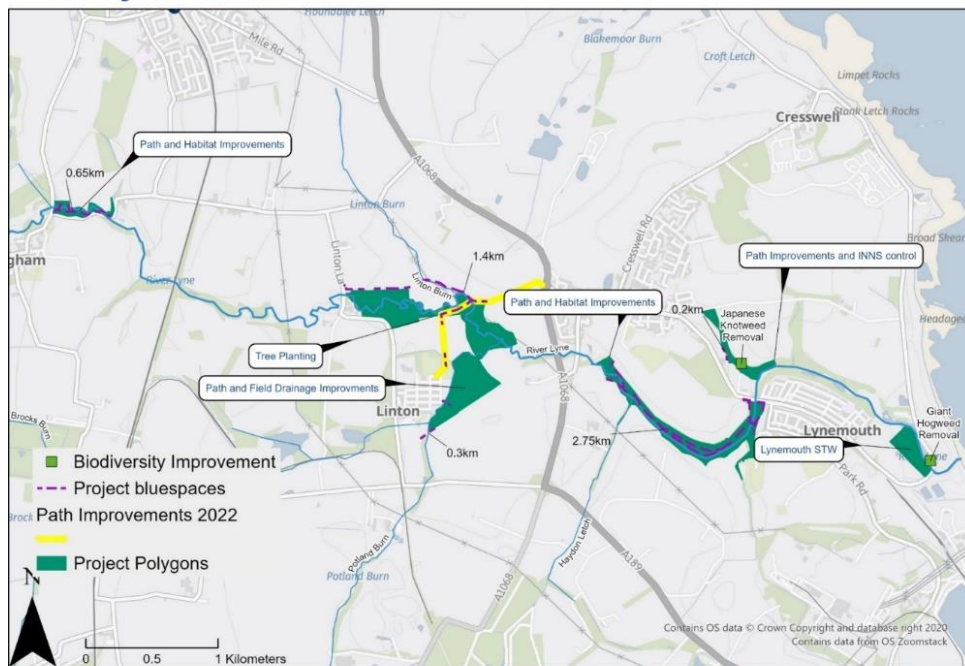
Breakdown of native species purchased by NRT

### River Lyne Revitalised



River Lyne Tree Planting delivery summary (Central Point NZ262919)

### River Lyne Revitalised



**Total Length of Accessible Water Environment: 5.3 km**

Original forecasted Bluespaces impacted through the River Lyne Revitalised project